

PAREXLANKO

PAREXAL

**SIMPLIFY
YOUR RESTORATION WORK !**

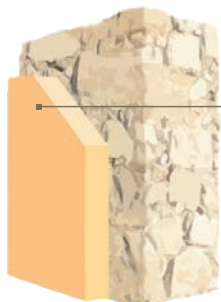


PAREXAL

LIME-BASED RESTORATION RENDER



ONE **SINGLE PRODUCT** FOR **RENDERING** AND **FINISHING**



1 coat of PAREXAL = render base coat + finishing coat

- Faster restoration time
- 10 to 50 mm thickness
- Application by hand or by spray machine

PRO TIP

PAREXAL is also suitable for **repointing** old stone or for **rendering facing stone**



COMPATIBLE WITH **ALL OLD** AND **FRAGILE SUBSTRATES**

- Very soft stone, red Toulouse brick, rammed earth, cob, witchet, clinker...
- Suitable for use in wine-producing environments



PRO TIP

PAREXAL can also be applied to **NEW SUBSTRATES** (e.g. concrete, concrete blocks, hemp blocks, hempcrete) and is therefore ideal for ensuring a coherent finish and appearance when building an **extension** or **add-on**

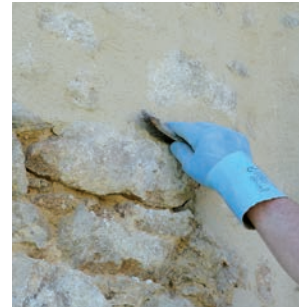
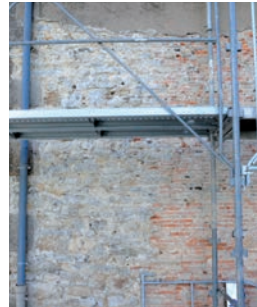


SIMPLIFY YOUR RESTORATION WORK !



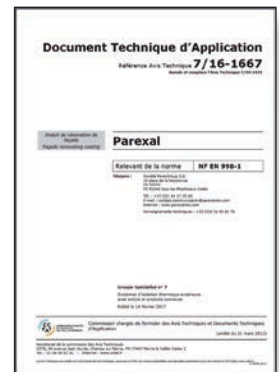
SUBSTRATE-FRIENDLY

- High hydrated lime content
- High water vapour permeability
- High resilient (low elasticity modulus)



A RELIABLE TECHNIQUE

- PAREXAL is patented in France since 1996
- DTA Technical Approval and QB Certificate
- Suitable for use to ground level (W2 classified)



CUSTOMIZABLE FINISHES

- By adding local sand or earth directly on site
- **Dosage**
 - up to 2.5 litres washed 2-5 mm sand per bag
 - up to 250 g earth per bag

Scan the **FLASHCODE** below to view the entire **PAREXAL colour range**



LATEST PAREXAL NEWS FOR 2018 !

NEW PACKAGING !

Go to the **Technical Data Sheet** via the flashcode on

The new **25 kg** bags - very convenient indeed !





Scan for TDS

Customer support

0 826 08 20 20

Service 0,15 €/min
+ prix appel

Technical information

0 826 08 68 78

Service 0,15 €/min
+ prix appel

PAREXLANKO

ParexGroup S.A.

19, place de la Résistance - CS 50053 - 92445 Issy-Les-Moulineaux Cedex - Tel. : +33 (0)1 41 17 20 00

Find out more @ parexlanko.com or



YouTube

