

740 LANKOSCELFIX



1/2



PRODUCT FEATURES

- ▶ Pure epoxy resin
- ▶ Awarded three ETAs
- ▶ «Seismic» certified
- ▶ High performance
- ▶ Can be used on damp concrete and flooded holes

REFERENCE DOCUMENTS

- ▶ ETA-15/0157
- ▶ ETA-15/0156
- ▶ ETA-C2 - SEISMIC

DESCRIPTION

• **740 LANKOSCELFIX** is a pure epoxy chemical sealing resin approved for use with a complete range of threaded rods (from M8-M30) and concrete rebars (diameters from 8-32 mm). Can be used on damp concrete and in flooded holes without doubling the loading lead time.

USES

- Heavy structural engineering
- Heavy industrial building
- Heavy electrics
- Heavy hydraulics and tinplating
- Stone
- Solid brick
- Wood
- Concrete
- Underwater applications

INSTALLATION TIME

Equipment temperature	Handling time	Pre-loading lead time
30°C	20 min	12 h
25°C	30 min	14 h
20°C	50 min	16 h
15°C	1 h 10	22 h
10°C	1 h 40	28 h
5°C	2 h 30	41 h
0°C	3 h 20	54 h

Minimum cartridge temperature for application: +5°C.

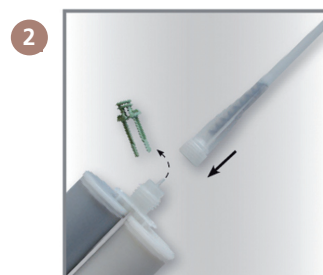
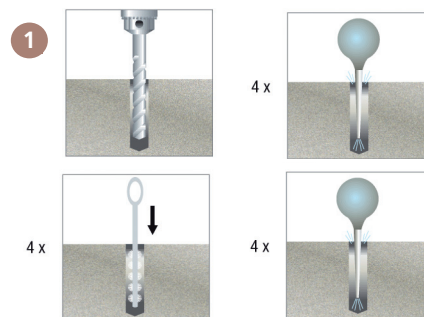
NUMBER OF FIXINGS

Threaded rod	Hole D_0 (mm) x h_1 (mm)	Number of fixings
M8	10 x 85	± 89
M10	12 x 95	± 60
M12	14 x 115	± 36
M16	18 x 130	± 24
M20	24 x 175	± 8
M27	28 x 215	± 6
M30	35 x 275	± 5

The number of fixings is determined by calculating solely the theoretical product volume required for filling the hole, excluding the volume of the threaded rod.

INSTALLATION PROCEDURE

- Drill a hole, taking care to keep the drill bit in a perpendicular position.
- Blow into the hole using a manual pump or compressed air system in order to remove any traces of dust.
- Clean in and around the hole with a metal barrel brush.
- Blow into the hole again in order to remove any remaining traces of dust or other residual matter.
- Unscrew the cap, screw on the mixer tube and insert the cartridge into the gun.
- Suitable eye and hand protection should be worn when using this product.



740 LANKOSCELFIX

2/2

PACKAGING

- ▶ 470 ml dual component cartridge

STORAGE

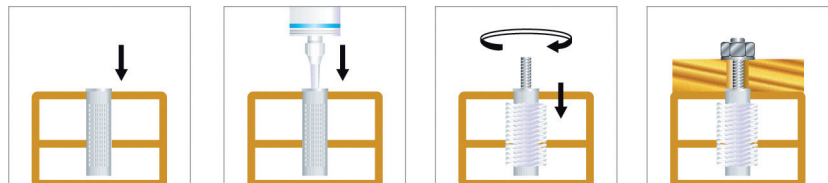
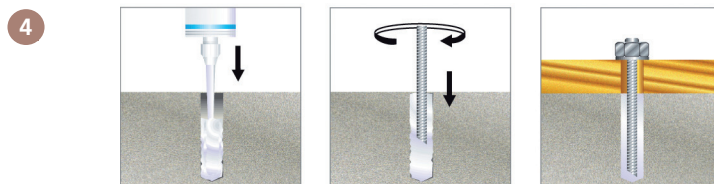
- ▶ **18 months**
from date of manufacture if stored
in unopened original packing in dry
conditions

WARRANTY

- ▶ Manufacturer's liability

INSTALLATION PROCEDURE

- Extrude an initial amount of the product, taking care to ensure that:
 - the product flowing through the transparent tube is indeed a mixture of the two components, i.e. component A (white) and component B (black)
 - the two components are completely mixed, i.e. the product extruded is of a uniform colour (see fig.3).
- Only then may the cartridge be used.
- 1/ Extrude the resin into the drill hole until two-thirds full. If the substrate is partially hollow, insert a plastic casing and extrude the product into the casing.
- 2/ Take a threaded rod with a tip cut at an angle of 45°. Before inserting the rod check to ensure that the surface is dry and free of any traces of oil or other contaminating agents.
- Insert the rod with a circular motion so as to remove any air bubbles.
- 3/ After inserting the rod, consult the recommended setting times indicated on the cartridge and in the Technical Data Sheet.
- 4/ Ensure that the product has fully hardened before applying any load.
- 5/ The cartridge can be re-used at a later date by replacing the used mixer tube with a new one. Always check that the two components are completely mixed (fig.3) before extruding into the drill hole.



TECHNICAL ASSISTANCE: ParexGroup S.A. will, on request, provide information and assistance to companies in relation to the specific use of a product. Such assistance shall not be assimilated with structural design and conception, nor the compliance of substrates, nor as a control of usage rules in force.

TECHNICAL DATA SHEET ISSUED - September 2017

The information provided in this document results from our knowledge of the products and our experience. Prior to application, customers and users are requested to check that they are in possession of the latest version of this document. Please check for updates at www.parexlanko.com.

PAREXGROUP S.A. 19 place de la Résistance - CS 50053
92445 Issy-les-Moulineaux Cedex - Tél. (33) 01 41 17 20 00
Technical information : 0 826 08 68 78 (0,15 €/min + phone call price)

PAREXLANKO