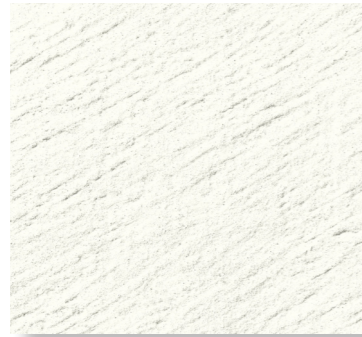
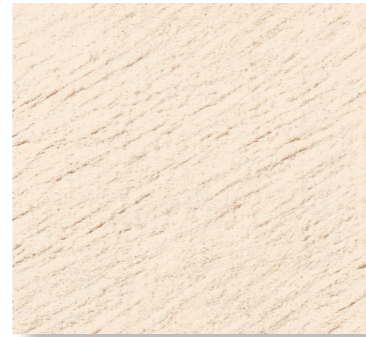


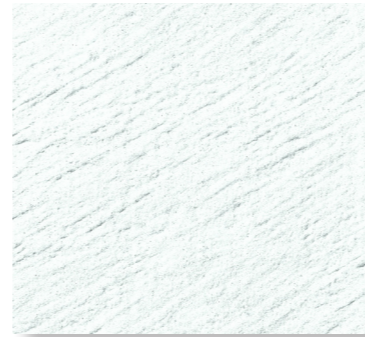
G00 Naturel



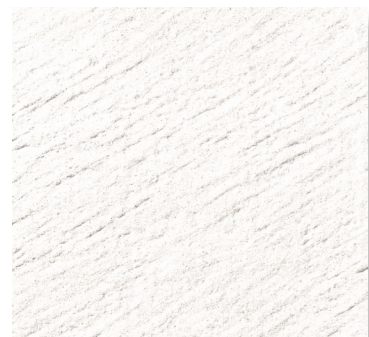
G20 Blanc Cassé



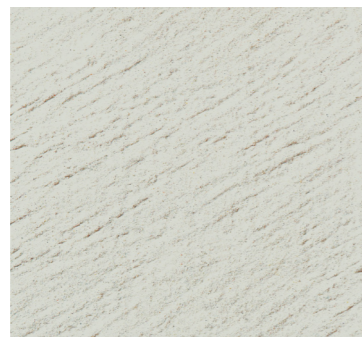
O30 Beige Orange



B10 Terre de Lune



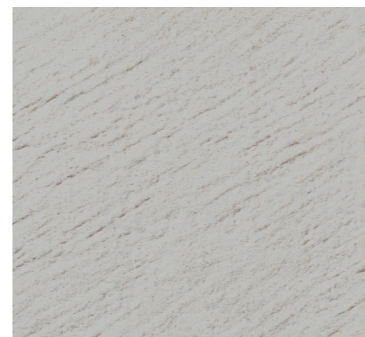
G30 Gris Souris



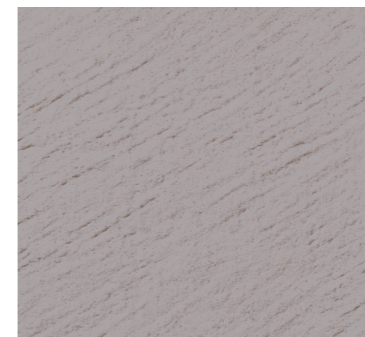
G50 Gris Cendre



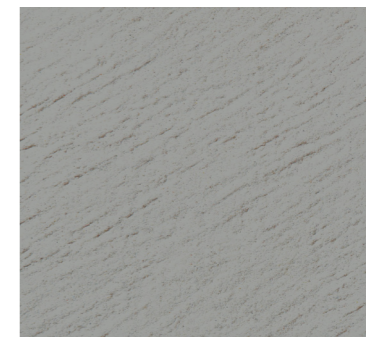
G71 Gris Sauvage



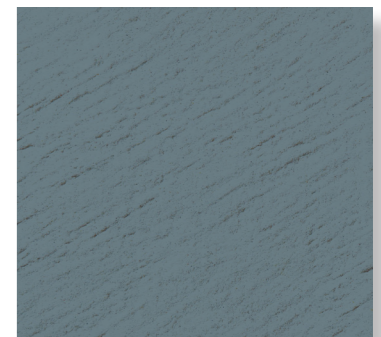
G16 Silex



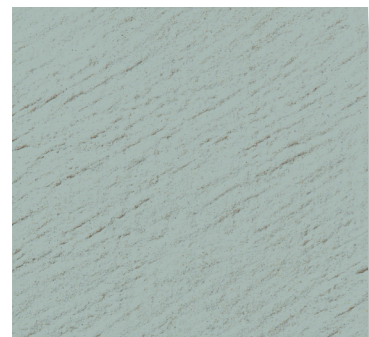
B68* Ardoise



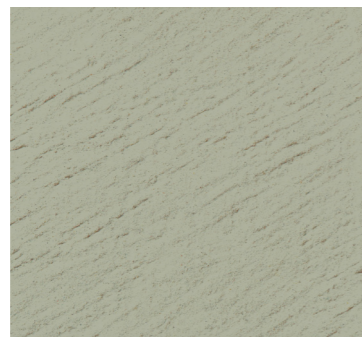
G60* Gris Volvic



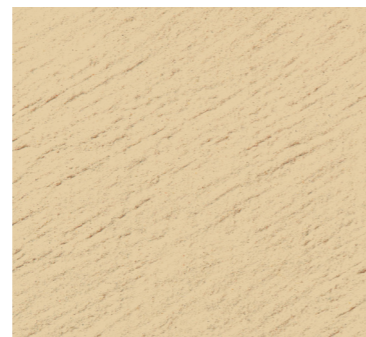
G95* Gris de Payne



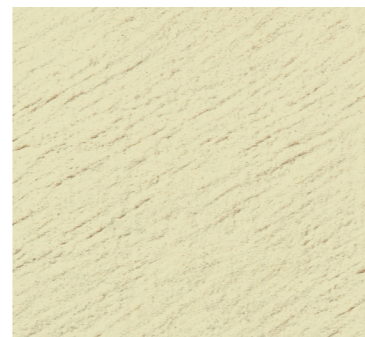
B14 Aigue Marine



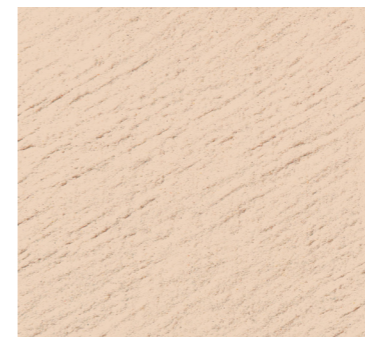
V42 Vert Amande



T30 Terre d'Argile



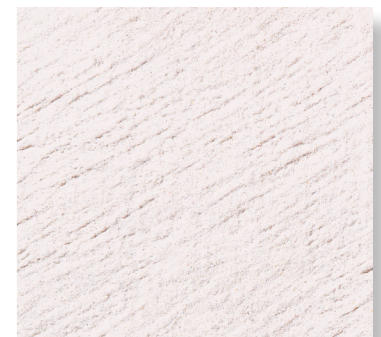
T60 Terre Feutrée



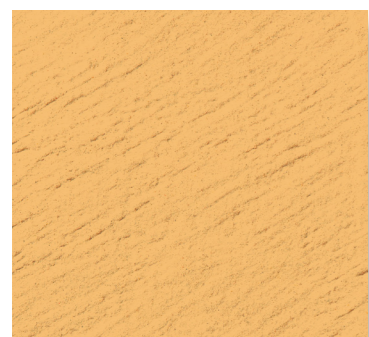
T153 Sépia Beige



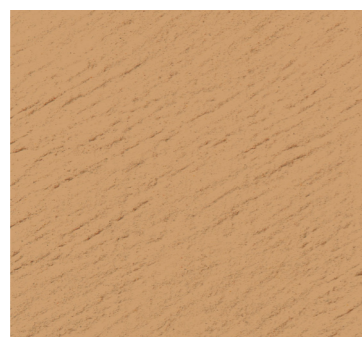
T10 Grège



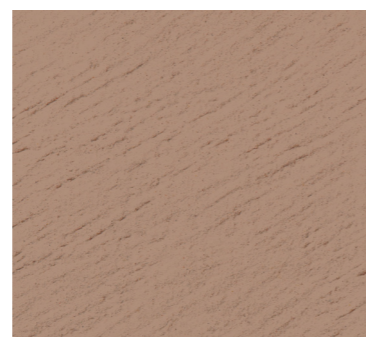
G101 Gris Rose Poudré



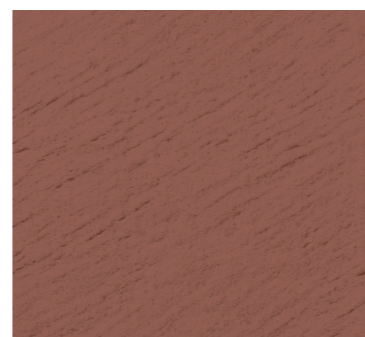
O84 Brun Orangé



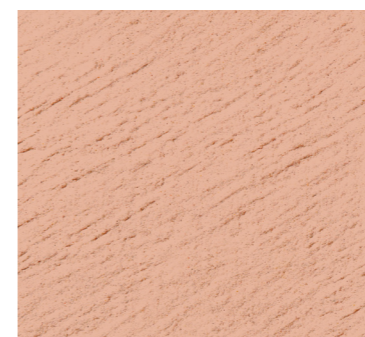
O138* Tanné



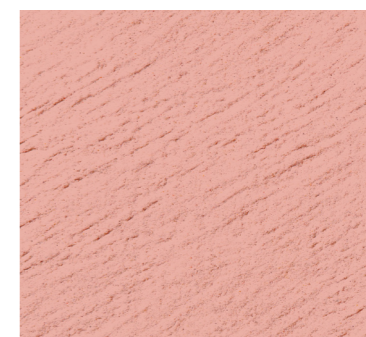
G84* Marron Sépia



R122 Grès des Vosges



T164 Noisette



R64 Rose Pêche

Le DTU 26.1 limite le coefficient d'absorption du rayonnement solaire de l'enduit fini à 0.7. Les enduits de couleur foncée, du fait de leur plus grande absorption du rayonnement solaire, augmentent les contraintes et variations thermiques, favorisent le nuançage ou la perception visuelle d'efflorescences blanches et micro-fissures.

Toutes les teintes présentées sur ce document doivent être considérées comme indicatives. Leur appréciation diffère selon la luminosité de votre écran et selon le type d'imprimante si le document est imprimé.